



**Geo Listening®**

## **School Advisories**

**703 Pier Avenue  
Suite B704  
Hermosa Beach, CA 90254**

**(310) 421-8873**

**[www.geolistening.com](http://www.geolistening.com)**

## Geo Listening Advisory #3

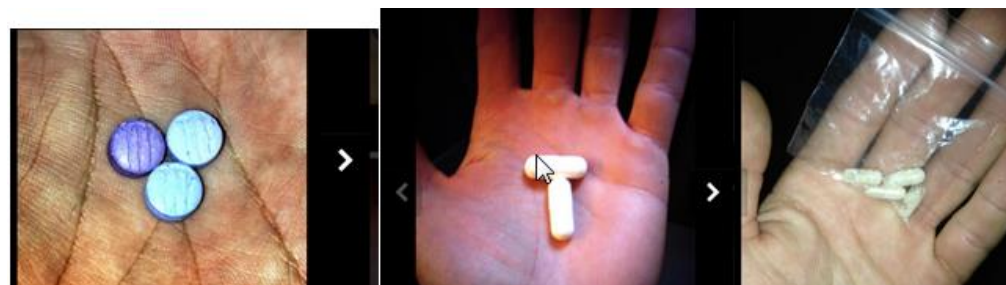
December 4, 2013

Geo Listening will notify client and non-client school district leaders when it has discovered safety or disruptive actions trending on Social Networks. These advisories will be sent to leadership via email. Geo Listening analysts have found posts about the use of ecstasy drugs commonly known as "Molly."

Emergency Room admittances have doubled in the last six years due to the increased use of "MOLLY"

**What is Molly?** Ecstasy is the pill form of MDMA, whereas "Molly" is the powder form. Molly is a drug made up of cocaine, crack, ecstasy, meth, and bath salt. MDMA is an empathogenic drug of phenethylamine and amphetamine classes of drugs. MDMA has become widely known as "ecstasy, X, E", usually referring to its street pill form, although this term may also include the presence of possible adulterants. It is classified as highly addictive (and, illegal) by the Federal Drug Association.

We will contact districts where we have been able to positively identify a student or school/district name with more detailed information when we find communication threads discussing the use of these drug s. Here are several of the images/links that we have seen thus far.



For addition information, please access the link below:

[http://www.cnn.com/2013/11/22/health/9-things-molly-drug/index.html?hpt=hp\\_t5](http://www.cnn.com/2013/11/22/health/9-things-molly-drug/index.html?hpt=hp_t5)